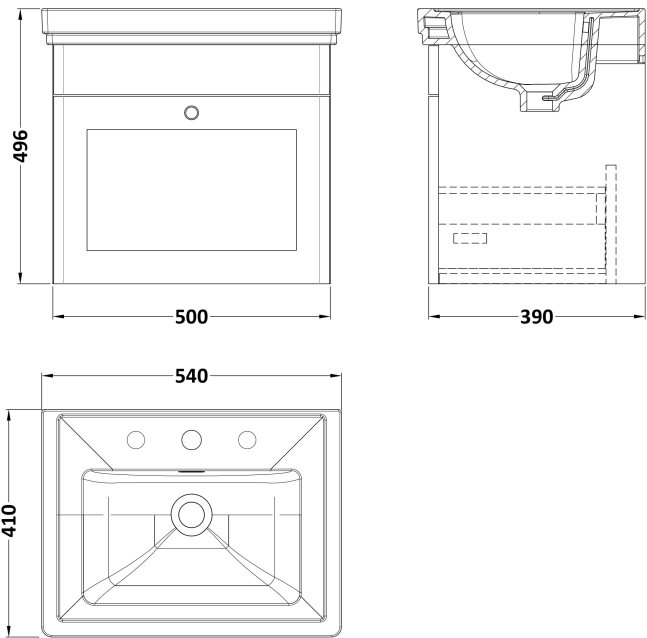


Sales Code: CLC1491B

Description: 500 W/H 1-Drawer Unit & Basin 3Th

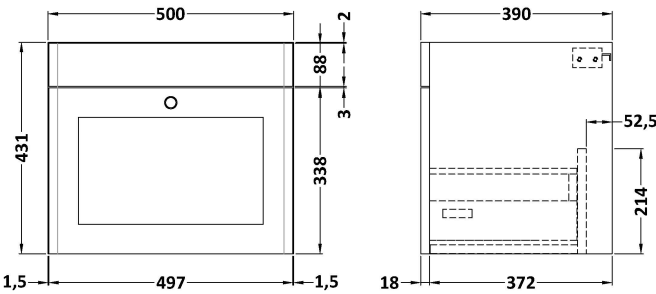


Packaging Details

Barcode: 5056462688213

Sales Code: CLA1491

Description: 500 W/H 1-Drawer Unit (431X500x390)



Product Dimensions

| | |
|-------------------|------|
| Height (mm): | 431 |
| Width (mm): | 500 |
| Depth (mm): | 390 |
| Nett Weight (kg): | 15.2 |

Packaging Dimensions

| | |
|--------------------|------|
| Height (mm): | 465 |
| Width (mm): | 525 |
| Depth (mm): | 415 |
| Gross Weight (kg): | 15.7 |

Packaging Data

| | |
|---------------|---------------------|
| Box Colour: | Brown Cardboard Box |
| Box Qty: | 1 |
| Label Size: | 100 x 50 |
| Label Colour: | White Label |
| Label Qty: | 2 |

Outer Box Dimensions (If Applicable)

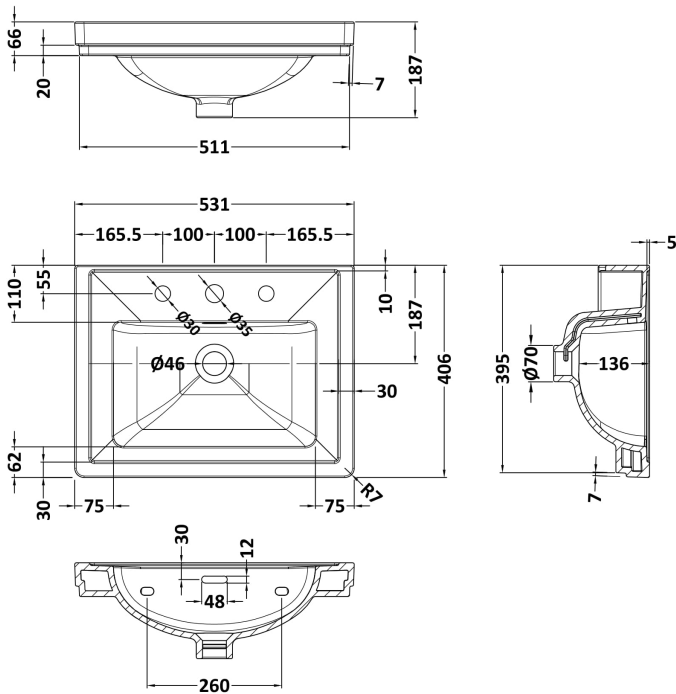
| | |
|--------------------|---------------|
| Height (mm): | |
| Width (mm): | |
| Depth (mm): | |
| Gross Weight (kg): | |
| Barcode: | 5056462643250 |

Product Details

| | |
|--------------------------|--------------------------------|
| Country of Origin: | China |
| Fitting Instruction: | No |
| CE & UKCA: | N/A |
| FSC Certified Materials: | Yes |
| Colour: | Satin Soft Black |
| Construction Method: | Cam & Wood Dowel |
| Construction Type: | Rigid |
| Cabinet Finish: | MFC Painted Matt |
| Fascia Finish: | Mdf Painted Matt |
| Cabinet Thickness (mm): | 18 |
| Fascia Thickness (mm): | 18 |
| Drawer Included: | Yes |
| Drawer Type: | 80mm High Metal S/C Inc Galler |
| No of Shelves: | Not Applicable |
| Hinge Type: | Not Applicable |
| Hinge Included: | Not Applicable |
| Adjustable Legs: | No, Not Required |
| Fixings Included: | Yes |
| Handle Style: | Traditional |
| Waste Shroud: | Yes |
| Handle Included: | Yes, Supplied |
| Handle Type: | Knob |

Sales Code: CBM532

Description: 500 Classique Basin 3Th



Product Dimensions

| | |
|-------------------|------|
| Height (mm): | 187 |
| Width (mm): | 531 |
| Depth (mm): | 406 |
| Nett Weight (kg): | 13.5 |

Packaging Dimensions

| | |
|--------------------|------|
| Height (mm): | 430 |
| Width (mm): | 550 |
| Depth (mm): | 220 |
| Gross Weight (kg): | 13.5 |

Packaging Data

| | |
|---------------|-------------------------------|
| Box Colour: | Brown Cardboard Box - Printed |
| Box Qty: | 1 |
| Label Size: | 100 x 50 |
| Label Colour: | White Label |
| Label Qty: | 2 |

Outer Box Dimensions (If Applicable)

| | |
|--------------------|---------------|
| Height (mm): | |
| Width (mm): | |
| Depth (mm): | |
| Gross Weight (kg): | |
| Barcode: | 5056462643649 |

Product Details

| | |
|---------------------------|----------------|
| Country of Origin: | Utd.Arab.Emir. |
| Fitting Instruction: | No |
| Certification: CE & UKCA: | No |
| WRAS: | N/A |
| WRAS No: | N/A |
| Product Material: | Fireclay |
| Fixing Supplied: | No |

| | | |
|--------------|-----------------|-------------------------------|
| Pans/Bidets: | Trap Style: N/A | Includes Seat: Not Applicable |
|--------------|-----------------|-------------------------------|

| | | |
|--------|--------------------------------|----------------------------|
| Seats: | Seat Type: N/A | Material: Not Applicable |
| | Function: Not Applicable | Hinge Type: Not Applicable |
| | Hinge Material: Not Applicable | |

| | | |
|-----------|--------------------------------|--------------------------|
| Cisterns: | Operating Type: Not Applicable | Fittings: Not Applicable |
| | Lever Type: Not Applicable | |

| | | |
|---------|--------------------------|-------------------------|
| Basins: | Tap Hole: Three Tapholes | Chain Stay Hole: No |
| | Template: Not Required | Waste Type Req: Slotted |
| | Overflow Inc: Yes | Overflow Cover: Yes |
| | Inner Bowl Depth (mm): | 136 mm |