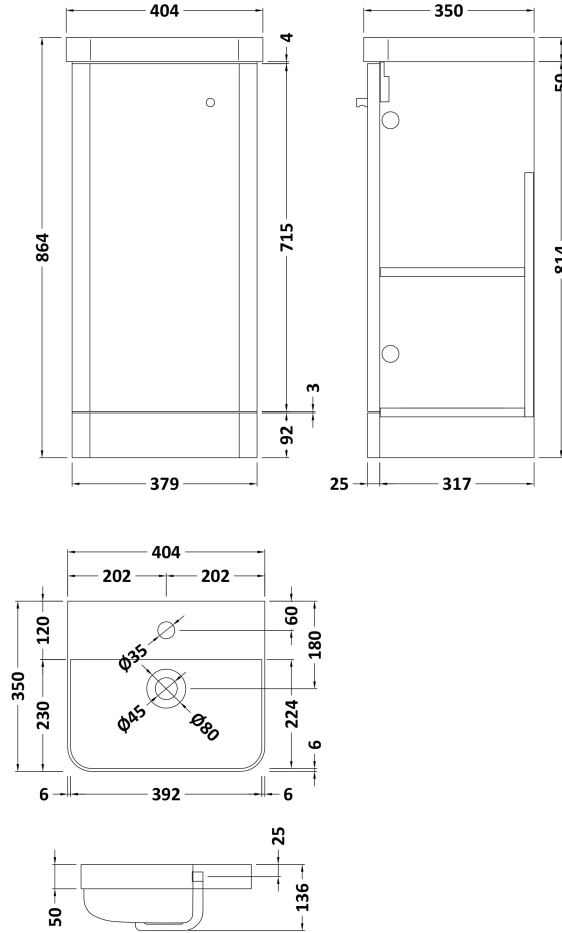


Sales Code: COR802

Description: 400 F/S 1-Door Unit & Basin

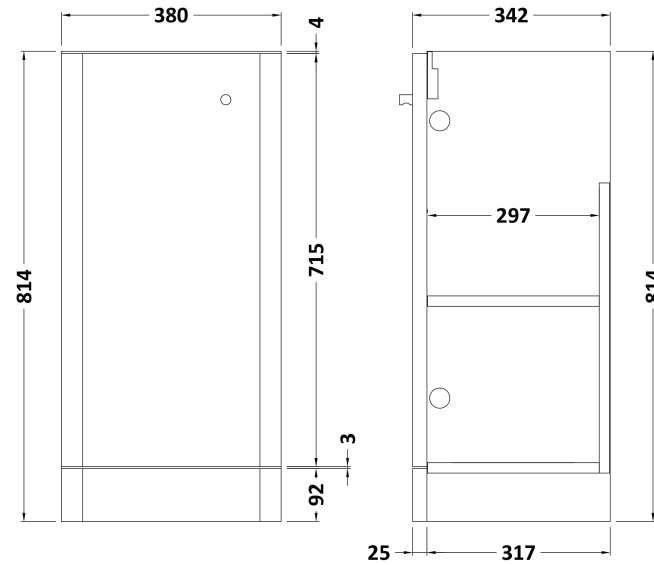


### Packaging Details

Barcode: 5056462658223

Sales Code: RC0802

Description: 400 Floor Standing 1-Door Unit



### Product Dimensions

|                   |      |
|-------------------|------|
| Height (mm):      | 814  |
| Width (mm):       | 379  |
| Depth (mm):       | 342  |
| Nett Weight (kg): | 15.5 |

### Packaging Dimensions

|                    |     |
|--------------------|-----|
| Height (mm):       | 835 |
| Width (mm):        | 400 |
| Depth (mm):        | 340 |
| Gross Weight (kg): | 16  |

### Packaging Data

|               |                               |
|---------------|-------------------------------|
| Box Colour:   | Brown Cardboard Box - Printed |
| Box Qty:      | 1                             |
| Label Size:   | 100 x 50                      |
| Label Colour: | Not Applicable                |
| Label Qty:    | 0                             |

### Outer Box Dimensions (If Applicable)

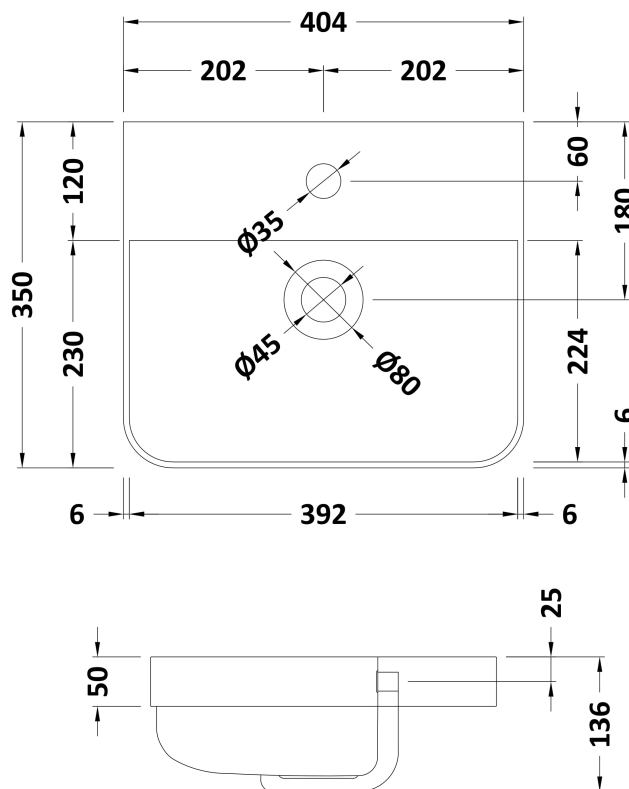
|                    |               |
|--------------------|---------------|
| Height (mm):       |               |
| Width (mm):        |               |
| Depth (mm):        |               |
| Gross Weight (kg): |               |
| Barcode:           | 5056462617862 |

### Product Details

|                          |                              |
|--------------------------|------------------------------|
| Country of Origin:       | China                        |
| Fitting Instruction:     | No                           |
| CE & UKCA:               | N/A                          |
| FSC Certified Materials: | Yes                          |
| Colour:                  | Satin Green                  |
| Construction Method:     | Cam & Wood Dowel             |
| Construction Type:       | Rigid                        |
| Cabinet Finish:          | MFC Painted Matt             |
| Fascia Finish:           | Mdf Painted Matt             |
| Cabinet Thickness (mm):  | 16                           |
| Fascia Thickness (mm):   | 25                           |
| Drawer Included:         | No                           |
| Drawer Type:             | Not Applicable               |
| No of Shelves:           | 2                            |
| Hinge Type:              | 95 Degree Clip-On Soft Close |
| Hinge Included:          | Yes                          |
| Adjustable Legs:         | No                           |
| Fixings Included:        | Yes                          |
| Handle Style:            | Modern                       |
| Waste Shroud:            | No                           |
| Handle Included:         | Yes                          |
| Handle Type:             | Knob                         |

Sales Code: RC002

Description: 400 Thin Edge Basin 1Th (Radius Corners)



### Product Dimensions

|                   |     |
|-------------------|-----|
| Height (mm):      | 135 |
| Width (mm):       | 405 |
| Depth (mm):       | 355 |
| Nett Weight (kg): | 9.5 |

### Packaging Dimensions

|                    |     |
|--------------------|-----|
| Height (mm):       | 415 |
| Width (mm):        | 440 |
| Depth (mm):        | 210 |
| Gross Weight (kg): | 10  |

### Packaging Data

|               |                               |
|---------------|-------------------------------|
| Box Colour:   | Brown Cardboard Box - Printed |
| Box Qty:      | 1                             |
| Label Size:   | 130 x 95                      |
| Label Colour: | Not Applicable                |
| Label Qty:    | 0                             |

### Outer Box Dimensions (If Applicable)

|                    |               |
|--------------------|---------------|
| Height (mm):       |               |
| Width (mm):        |               |
| Depth (mm):        |               |
| Gross Weight (kg): |               |
| Barcode:           | 5056211853381 |

### Product Details

|                           |                           |
|---------------------------|---------------------------|
| Country of Origin:        | China                     |
| Fitting Instruction:      | No                        |
| Certification: CE & UKCA: | No WRAS: N/A WRAS No: N/A |
| Product Material:         | Vitreous China            |
| Fixing Supplied:          | No                        |

**Pans/Bidets:** Trap Style: Not Applicable Includes Seat: Not Applicable

**Seats:** Seat Type: Not Applicable Material: Not Applicable  
Function: Not Applicable Hinge Type: Not Applicable  
Hinge Material: Not Applicable

**Cisterns:** Operating Type: Not Applicable Fittings: Not Applicable  
Lever Type: Not Applicable

**Basins:** Tap Hole: One Taphole Chain Stay Hole: No  
Template: Not Required Waste Type Req: Slotted  
Overflow Inc: Yes Overflow Cover: Yes  
Inner Bowl Depth (mm): 86 mm