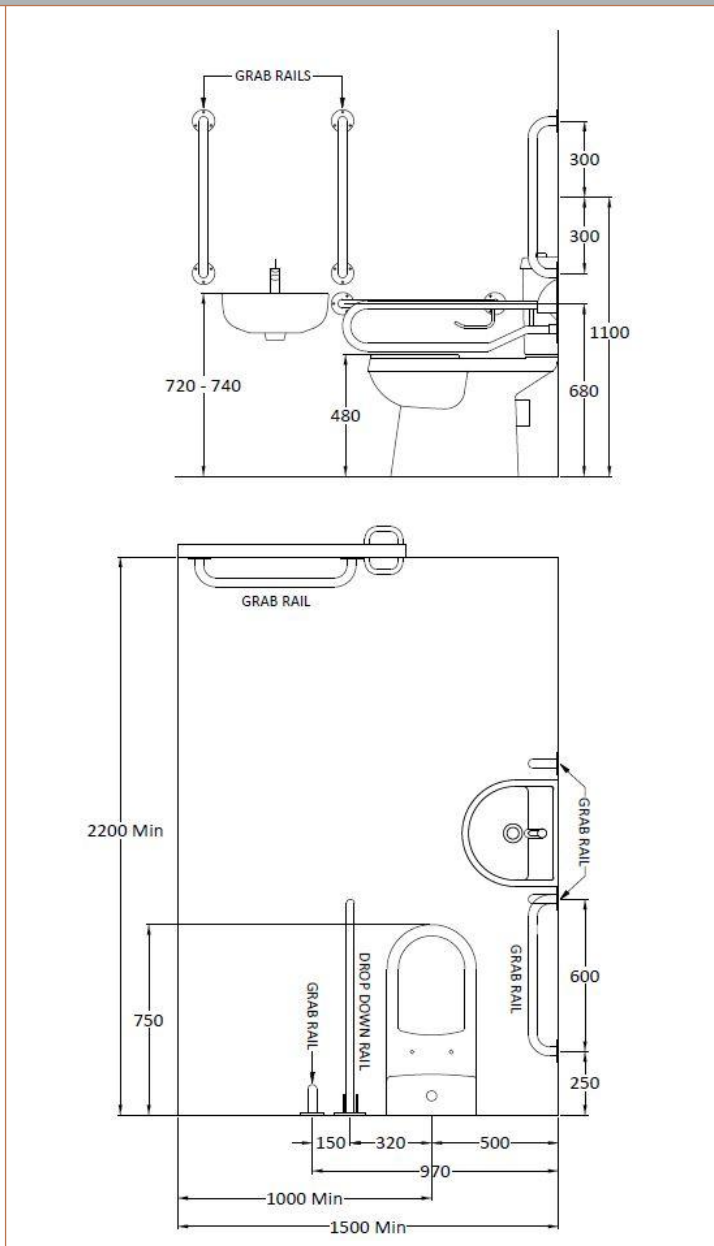


Sales Code: DOCMP001

Description: Doc M Pack White



Product Dimensions

| | |
|-------------------|------|
| Height (mm): | 0 |
| Width (mm): | 0 |
| Depth (mm): | 665 |
| Nett Weight (kg): | 64.5 |

Packaging Dimensions

| | |
|--------------------|------|
| Height (mm): | 660 |
| Width (mm): | 620 |
| Depth (mm): | 890 |
| Gross Weight (kg): | 64.5 |

Packaging Data

| | |
|---------------|-------------------------------|
| Box Colour: | Brown Cardboard Box - Printed |
| Box Qty: | 1 |
| Label Size: | 100 x 50 |
| Label Colour: | White Label |
| Label Qty: | 2 |

Outer Box Dimensions (If Applicable)

| | |
|--------------------|---------------|
| Height (mm): | |
| Width (mm): | |
| Depth (mm): | |
| Gross Weight (kg): | |
| Barcode: | 5055369028399 |

Product Details

| | |
|---------------------------|----------------|
| Country of Origin: | China |
| Fitting Instruction: | No |
| Certification: CE & UKCA: | No |
| WRAS: | N/A |
| WRAS No: | N/A |
| Product Material: | Vitreous China |
| Fixing Supplied: | No |

Pans/Bidets: Trap Style: P Trap Includes Seat: Yes

Seats: Seat Type: Round Material: Polypropylene
Function: Std - Non Soft Close Hinge Type: Bottom Fix
Hinge Material: Plastic

Cisterns: Operating Type: Push Button Fittings: Loose Single 6L
Lever Type: Plastic Chrome Plate

Basins: Tap Hole: One Taphole Chain Stay Hole: No
Template: Not Required Waste Type Req: Slotted
Overflow Inc: Yes Overflow Cover: No
Inner Bowl Depth (mm): 150mm