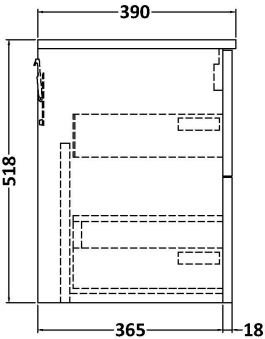
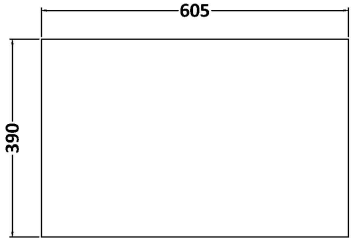
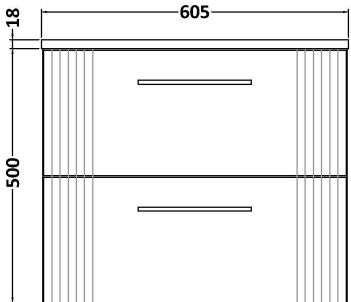


Sales Code: DPF1493W

Description: 600 W/H 2-Drawer Vanity & Worktop

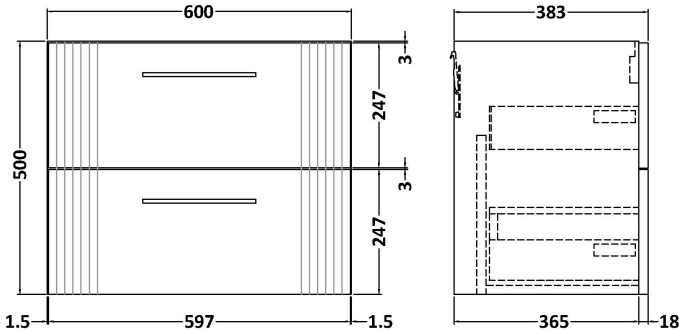
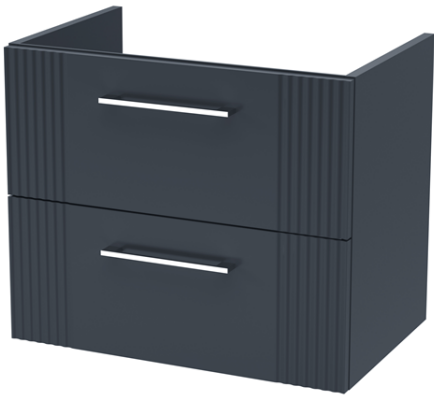


Packaging Details

Barcode: 5056462675954

Sales Code: FLT1493

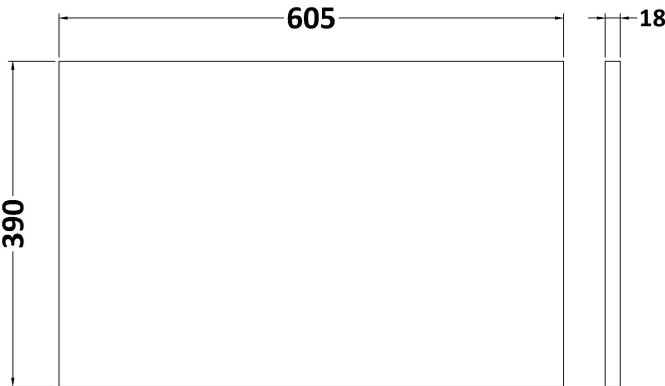
Description: 600 W/H 2-Drawer Unit



| Product Dimensions                   |                               |
|--------------------------------------|-------------------------------|
| Height (mm):                         | 500                           |
| Width (mm):                          | 600                           |
| Depth (mm):                          | 383                           |
| Nett Weight (kg):                    | 22.5                          |
| Packaging Dimensions                 |                               |
| Height (mm):                         | 520                           |
| Width (mm):                          | 620                           |
| Depth (mm):                          | 405                           |
| Gross Weight (kg):                   | 23                            |
| Packaging Data                       |                               |
| Box Colour:                          | Brown Cardboard Box - Printed |
| Box Qty:                             | 0                             |
| Label Size:                          | 0 x 0                         |
| Label Colour:                        | Not Applicable                |
| Label Qty:                           | 0                             |
| Outer Box Dimensions (If Applicable) |                               |
| Height (mm):                         |                               |
| Width (mm):                          |                               |
| Depth (mm):                          |                               |
| Gross Weight (kg):                   |                               |
| Barcode:                             | 5056462661155                 |
| Product Details                      |                               |
| Country of Origin:                   | China                         |
| Fitting Instruction:                 | No                            |
| CE & UKCA:                           |                               |
| FSC Certified Materials:             | Yes                           |
| Colour:                              | Satin Soft Black              |
| Construction Method:                 | Cam & Wood Dowel              |
| Construction Type:                   | Rigid                         |
| Cabinet Finish:                      | MFC Painted Gloss             |
| Fascia Finish:                       | Mdf Painted Gloss             |
| Cabinet Thickness (mm):              | 16                            |
| Fascia Thickness (mm):               | 18                            |
| Drawer Included:                     | Yes                           |
| Drawer Type:                         | 80mm High Metal Softclose     |
| No of Shelves:                       | 0                             |
| Hinge Type:                          | Not Applicable                |
| Hinge Included:                      | No                            |
| Adjustable Legs:                     | No, Not Required              |
| Fixings Included:                    | Yes                           |
| Handle Style:                        | Modern                        |
| Waste Shroud:                        | Yes                           |
| Handle Included:                     | Yes, Supplied                 |
| Handle Type:                         | Bar                           |

Sales Code: MWT1460

Description: 600 Worktop (605X390x18mm)



| Product Dimensions                   |                               |
|--------------------------------------|-------------------------------|
| Height (mm):                         | 18                            |
| Width (mm):                          | 605                           |
| Depth (mm):                          | 390                           |
| Nett Weight (kg):                    | 2.5                           |
| Packaging Dimensions                 |                               |
| Height (mm):                         | 25                            |
| Width (mm):                          | 625                           |
| Depth (mm):                          | 410                           |
| Gross Weight (kg):                   | 2.5                           |
| Packaging Data                       |                               |
| Box Colour:                          | Brown Cardboard Box - Printed |
| Box Qty:                             | 1                             |
| Label Size:                          | 100 x 50                      |
| Label Colour:                        | Not Applicable                |
| Label Qty:                           | 0                             |
| Outer Box Dimensions (If Applicable) |                               |
| Height (mm):                         |                               |
| Width (mm):                          |                               |
| Depth (mm):                          |                               |
| Gross Weight (kg):                   |                               |
| Barcode:                             | 5056462661285                 |
| Product Details                      |                               |
| Country of Origin:                   | China                         |
| Fitting Instruction:                 | No                            |
| CE & UKCA:                           | N/A                           |
| FSC Certified Materials:             | Yes                           |
| Colour:                              | Satin Soft Black              |
| Construction Method:                 | Not Applicable                |
| Construction Type:                   | Not Applicable                |
| Cabinet Finish:                      | Not Applicable                |
| Fascia Finish:                       | Mdf Painted Matt              |
| Cabinet Thickness (mm):              |                               |
| Fascia Thickness (mm):               | 18                            |
| Drawer Included:                     | Not Applicable                |
| Drawer Type:                         | Not Applicable                |
| No of Shelves:                       | Not Applicable                |
| Hinge Type:                          | Not Applicable                |
| Hinge Included:                      | Not Applicable                |
| Adjustable Legs:                     | Not Applicable                |
| Fixings Included:                    | Yes                           |
| Handle Style:                        | Not Applicable                |
| Waste Shroud:                        | Not Applicable                |
| Handle Included:                     | Not Applicable                |
| Handle Type:                         | Not Applicable                |