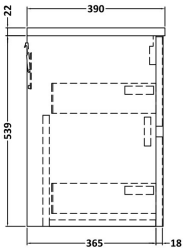
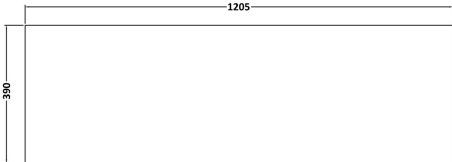
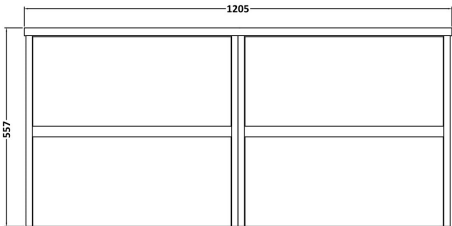


Sales Code: HAV2204LSB2

Description: 1200 W/H 4-Drawer Unit & Laminate Top

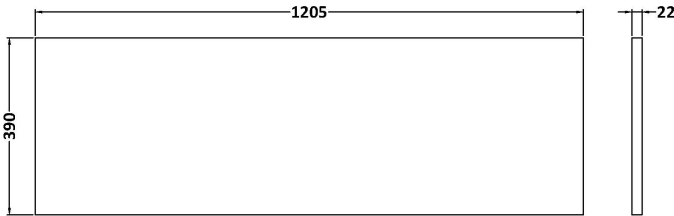
Packaging Details

Barcode: 5056678458105



Sales Code: LSB1200

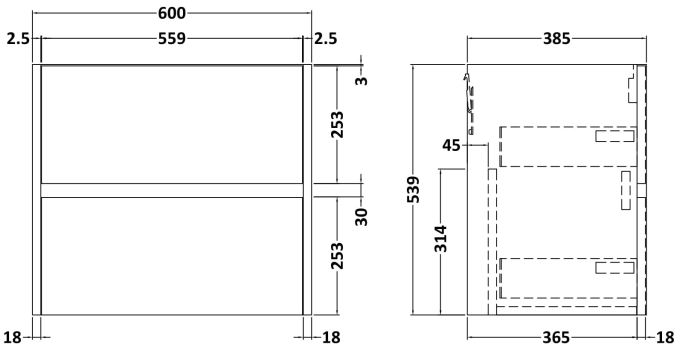
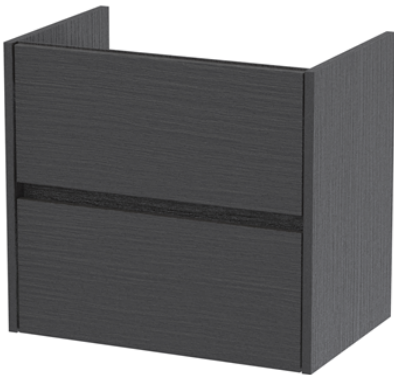
Description: Laminate Worktop 1205X390x22mm



| Product Dimensions                   |                     |
|--------------------------------------|---------------------|
| Height (mm):                         | 22                  |
| Width (mm):                          | 1205                |
| Depth (mm):                          | 390                 |
| Nett Weight (kg):                    | 5                   |
| Packaging Dimensions                 |                     |
| Height (mm):                         | 25                  |
| Width (mm):                          | 1215                |
| Depth (mm):                          | 455                 |
| Gross Weight (kg):                   | 5                   |
| Packaging Data                       |                     |
| Box Colour:                          | Brown Cardboard Box |
| Box Qty:                             | 1                   |
| Label Size:                          | 100 x 50            |
| Label Colour:                        | White Label         |
| Label Qty:                           | 1                   |
| Outer Box Dimensions (If Applicable) |                     |
| Height (mm):                         |                     |
| Width (mm):                          |                     |
| Depth (mm):                          |                     |
| Gross Weight (kg):                   |                     |
| Barcode:                             | 5056678449929       |
| Product Details                      |                     |
| Country of Origin:                   | United Kingdom      |
| Fitting Instruction:                 | No                  |
| CE & UKCA:                           | N/A                 |
| FSC Certified Materials:             | Yes                 |
| Colour:                              | Sparkling Black     |
| Construction Method:                 | Not Applicable      |
| Construction Type:                   | Not Applicable      |
| Cabinet Finish:                      | Not Applicable      |
| Fascia Finish:                       | MFC Laminated       |
| Cabinet Thickness (mm):              |                     |
| Fascia Thickness (mm):               | 22                  |
| Drawer Included:                     | No                  |
| Drawer Type:                         | Not Applicable      |
| No of Shelves:                       | 0                   |
| Hinge Type:                          | Not Applicable      |
| Hinge Included:                      | No                  |
| Adjustable Legs:                     | No, Not Required    |
| Fixings Included:                    | No                  |
| Handle Style:                        | Not Applicable      |
| Waste Shroud:                        | Not Applicable      |
| Handle Included:                     | No                  |
| Handle Type:                         | Not Applicable      |

Sales Code: NPH2224

Description: 600 W/H 2-Drawer Unit (385 Deep)



Product Dimensions

|                   |      |
|-------------------|------|
| Height (mm):      | 539  |
| Width (mm):       | 600  |
| Depth (mm):       | 385  |
| Nett Weight (kg): | 22.5 |

Packaging Dimensions

|                    |     |
|--------------------|-----|
| Height (mm):       | 560 |
| Width (mm):        | 620 |
| Depth (mm):        | 405 |
| Gross Weight (kg): | 23  |

Packaging Data

|               |                     |
|---------------|---------------------|
| Box Colour:   | Brown Cardboard Box |
| Box Qty:      | 1                   |
| Label Size:   | 100 x 50            |
| Label Colour: | White Label         |
| Label Qty:    | 2                   |

Outer Box Dimensions (If Applicable)

|                    |               |
|--------------------|---------------|
| Height (mm):       |               |
| Width (mm):        |               |
| Depth (mm):        |               |
| Gross Weight (kg): |               |
| Barcode:           | 5056462696423 |

Product Details

|                          |                                |
|--------------------------|--------------------------------|
| Country of Origin:       | United Kingdom                 |
| Fitting Instruction:     | No                             |
| CE & UKCA:               | N/A                            |
| FSC Certified Materials: | Yes                            |
| Colour:                  | Graphite Grey Woodgrain        |
| Construction Method:     | Cam & Wood Dowel               |
| Construction Type:       | Rigid                          |
| Cabinet Finish:          | MFC Textured Woodgrain         |
| Fascia Finish:           | MFC Textured Woodgrain         |
| Cabinet Thickness (mm):  | 18                             |
| Fascia Thickness (mm):   | 18                             |
| Drawer Included:         | Yes                            |
| Drawer Type:             | 80mm High Metal S/C Inc Galler |
| No of Shelves:           | 0                              |
| Hinge Type:              | Not Applicable                 |
| Hinge Included:          | No                             |
| Adjustable Legs:         | No                             |
| Fixings Included:        | Yes                            |
| Handle Style:            | Not Applicable                 |
| Waste Shroud:            | Yes                            |
| Handle Included:         | No, Not Required               |
| Handle Type:             | Handleless                     |