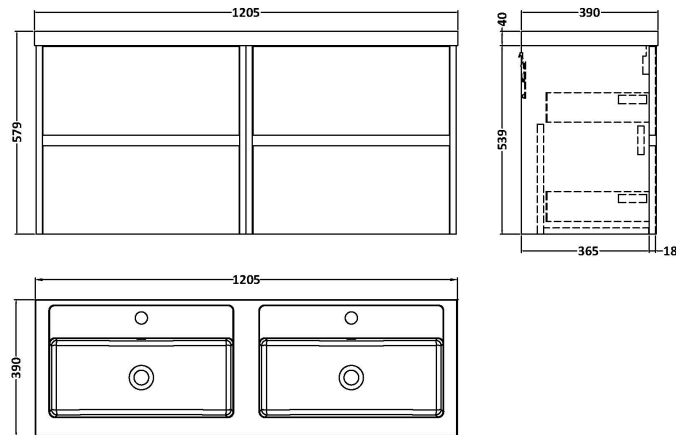
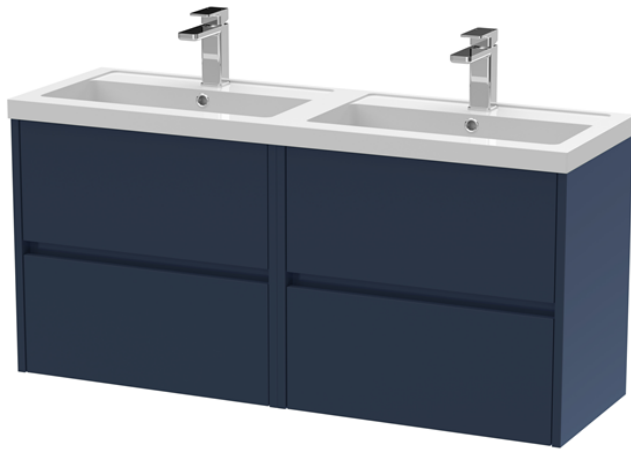


**Sales Code:** HAV2904C

**Description:** 1200 W/H 4-Drawer Unit & Double Basin

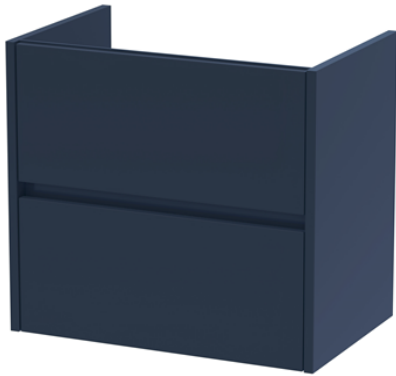


**Packaging Details**

Barcode: 5056678454046

Sales Code: NPH2924

Description: 600 W/H 2-Drawer Unit (385 Deep)



### Product Dimensions

|                   |      |
|-------------------|------|
| Height (mm):      | 539  |
| Width (mm):       | 600  |
| Depth (mm):       | 385  |
| Nett Weight (kg): | 22.5 |

### Packaging Dimensions

|                    |     |
|--------------------|-----|
| Height (mm):       | 560 |
| Width (mm):        | 620 |
| Depth (mm):        | 405 |
| Gross Weight (kg): | 23  |

### Packaging Data

|               |                     |
|---------------|---------------------|
| Box Colour:   | Brown Cardboard Box |
| Box Qty:      | 1                   |
| Label Size:   | 50 x 100            |
| Label Colour: | White Label         |
| Label Qty:    | 2                   |

### Outer Box Dimensions (If Applicable)

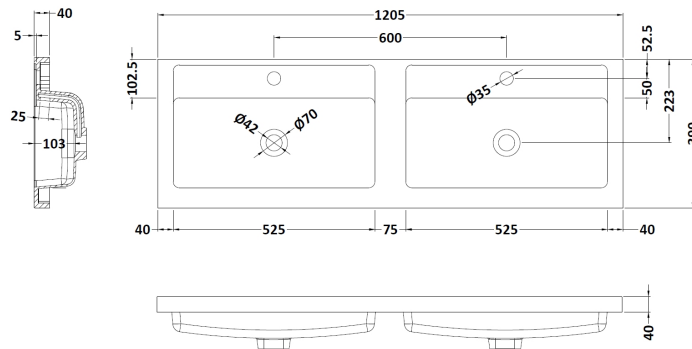
|                    |               |
|--------------------|---------------|
| Height (mm):       |               |
| Width (mm):        |               |
| Depth (mm):        |               |
| Gross Weight (kg): |               |
| Barcode:           | 5056678447512 |

### Product Details

|                          |                                |
|--------------------------|--------------------------------|
| Country of Origin:       | China                          |
| Fitting Instruction:     | No                             |
| CE & UKCA:               | N/A                            |
| FSC Certified Materials: | Yes                            |
| Colour:                  | Indigo Blue                    |
| Construction Method:     | Cam & Wood Dowel               |
| Construction Type:       | Rigid                          |
| Cabinet Finish:          | MFC Painted Matt               |
| Fascia Finish:           | Mdf Painted Matt               |
| Cabinet Thickness (mm):  | 16                             |
| Fascia Thickness (mm):   | 18                             |
| Drawer Included:         | Yes                            |
| Drawer Type:             | 80mm High Metal S/C Inc Galler |
| No of Shelves:           | 0                              |
| Hinge Type:              | Not Applicable                 |
| Hinge Included:          | No                             |
| Adjustable Legs:         | No                             |
| Fixings Included:        | Yes                            |
| Handle Style:            | Not Applicable                 |
| Waste Shroud:            | Yes                            |
| Handle Included:         | No, Not Required               |
| Handle Type:             | Handleless                     |

**Sales Code:** PMB424

**Description:** Double Polymarble Basin 1205 X 390



### Product Dimensions

|                   |       |
|-------------------|-------|
| Height (mm):      | 390   |
| Width (mm):       | 1205  |
| Depth (mm):       | 157   |
| Nett Weight (kg): | 18.12 |

### Packaging Dimensions

|                    |       |
|--------------------|-------|
| Height (mm):       | 100   |
| Width (mm):        | 1205  |
| Depth (mm):        | 400   |
| Gross Weight (kg): | 18.12 |

### Packaging Data

|               |                               |
|---------------|-------------------------------|
| Box Colour:   | Brown Cardboard Box - Printed |
| Box Qty:      | 1                             |
| Label Size:   | 100 x 50                      |
| Label Colour: | White Label                   |
| Label Qty:    | 2                             |

### Outer Box Dimensions (If Applicable)

|                    |               |
|--------------------|---------------|
| Height (mm):       |               |
| Width (mm):        |               |
| Depth (mm):        |               |
| Gross Weight (kg): |               |
| Barcode:           | 5056211815136 |

### Product Details

|                           |            |
|---------------------------|------------|
| Country of Origin:        | China      |
| Fitting Instruction:      | No         |
| Certification: CE & UKCA: | No         |
| WRAS:                     | N/A        |
| WRAS No:                  | N/A        |
| Product Material:         | Polymarble |
| Fixing Supplied:          | No         |

**Pans/Bidets:** Trap Style: Not Applicable Includes Seat: Not Applicable

**Seats:** Seat Type: Not Applicable Material: Not Applicable  
Function: Not Applicable Hinge Type: Not Applicable  
Hinge Material: Not Applicable

**Cisterns:** Operating Type: Not Applicable Fittings: Not Applicable  
Lever Type: Not Applicable

**Basins:** Tap Hole: Two Tapholes Chain Stay Hole: No  
Template: Not Required Waste Type Req: Slotted  
Overflow Inc: Yes Overflow Cover: Yes  
Inner Bowl Depth (mm): 103 mm