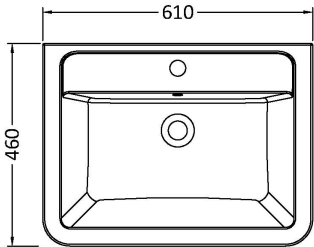
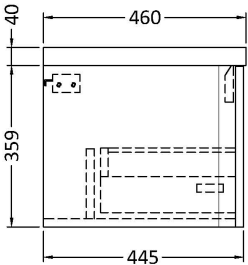
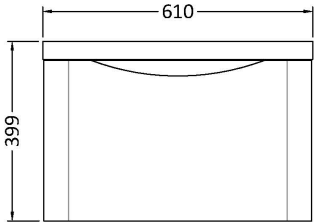


Sales Code: LUN305A

Description: 600 W/H 1-Drawer Unit & Ceramic Basin

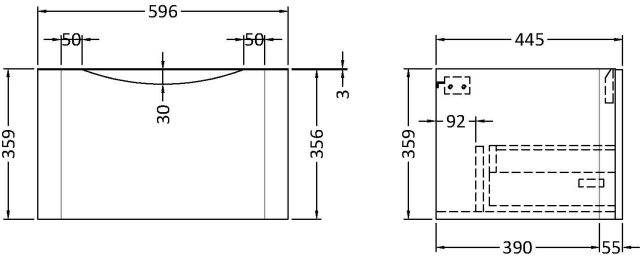
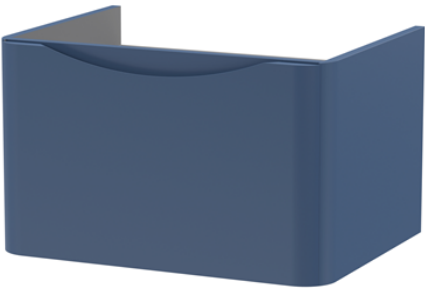
Packaging Details

Barcode: 5056462644622



Sales Code: SML394

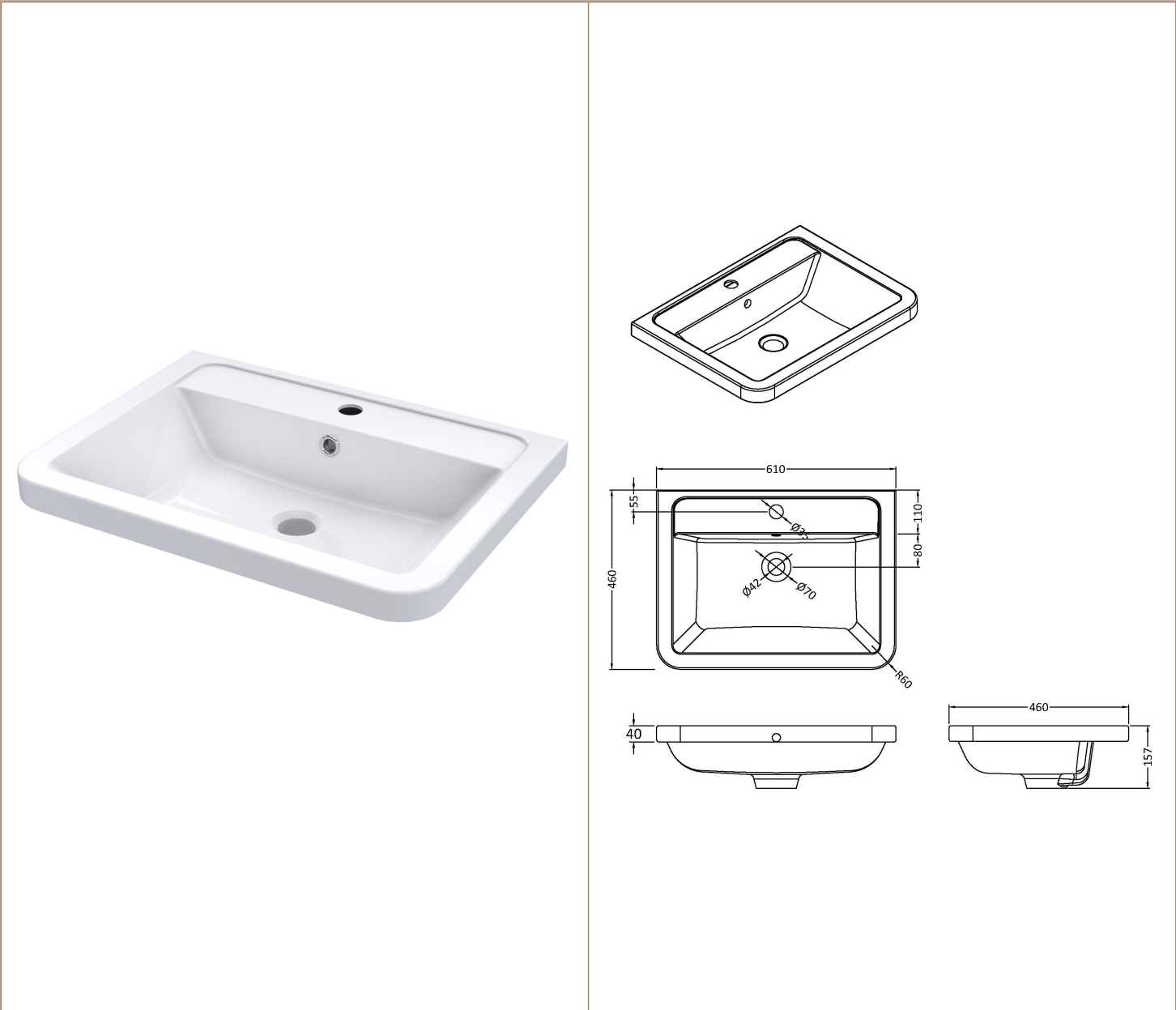
Description: 600 W/H Single Drawer Unit



| Product Dimensions | |
|--------------------------------------|--------------------------------|
| Height (mm): | 359 |
| Width (mm): | 596 |
| Depth (mm): | 445 |
| Nett Weight (kg): | 21.5 |
| Packaging Dimensions | |
| Height (mm): | 400 |
| Width (mm): | 640 |
| Depth (mm): | 480 |
| Gross Weight (kg): | 22 |
| Packaging Data | |
| Box Colour: | Brown Cardboard Box - Printed |
| Box Qty: | 1 |
| Label Size: | 100 x 50 |
| Label Colour: | White Label |
| Label Qty: | 2 |
| Outer Box Dimensions (If Applicable) | |
| Height (mm): | |
| Width (mm): | |
| Depth (mm): | |
| Gross Weight (kg): | |
| Barcode: | 5056462694481 |
| Product Details | |
| Country of Origin: | China |
| Fitting Instruction: | No |
| CE & UKCA: | N/A |
| FSC Certified Materials: | Yes |
| Colour: | Satin Blue |
| Construction Method: | Cam & Wood Dowel |
| Construction Type: | Rigid |
| Cabinet Finish: | MFC Painted Matt |
| Fascia Finish: | Mdf Painted Matt |
| Cabinet Thickness (mm): | 18 |
| Fascia Thickness (mm): | 18 |
| Drawer Included: | Yes |
| Drawer Type: | 80mm High Metal S/C Inc Galler |
| No of Shelves: | 0 |
| Hinge Type: | Not Applicable |
| Hinge Included: | Not Applicable |
| Adjustable Legs: | No |
| Fixings Included: | Yes |
| Handle Style: | Contemporary |
| Waste Shroud: | Yes |
| Handle Included: | Yes |
| Handle Type: | Inset |

Sales Code: CBM003

Description: Ceramic Basin 610X460



| | | |
|--------------------------------------|--------------------------------|-------------------------------|
| Product Dimensions | | |
| Height (mm): | 450 | |
| Width (mm): | 600 | |
| Depth (mm): | 157 | |
| Nett Weight (kg): | 12.82 | |
| Packaging Dimensions | | |
| Height (mm): | 470 | |
| Width (mm): | 640 | |
| Depth (mm): | 167 | |
| Gross Weight (kg): | 12.82 | |
| Packaging Data | | |
| Box Colour: | Brown Cardboard Box - Printed | |
| Box Qty: | 1 | |
| Label Size: | 100 x 50 | |
| Label Colour: | White Label | |
| Label Qty: | 2 | |
| Outer Box Dimensions (If Applicable) | | |
| Height (mm): | | |
| Width (mm): | | |
| Depth (mm): | | |
| Gross Weight (kg): | | |
| Barcode: | 5056211875789 | |
| Product Details | | |
| Country of Origin: | China | |
| Fitting Instruction: | No | |
| Certification: CE & UKCA: No | WRAS: N/A | WRAS No: N/A |
| Product Material: | Vitreous China | |
| Fixing Supplied: | No | |
| Pans/Bidets: | Trap Style: Not Applicable | Includes Seat: Not Applicable |
| Seats: | Seat Type: Not Applicable | Material: Not Applicable |
| | Function: Not Applicable | Hinge Type: Not Applicable |
| | Hinge Material: Not Applicable | |
| Cisterns: | Operating Type: Not Applicable | Fittings: Not Applicable |
| | Lever Type: Not Applicable | |
| Basins: | Tap Hole: One Taphole | Chain Stay Hole: No |
| | Template: Not Required | Waste Type Req: Slotted |
| | Overflow Inc: Yes | Overflow Cover: Yes |
| | Inner Bowl Depth (mm): 110mm | |