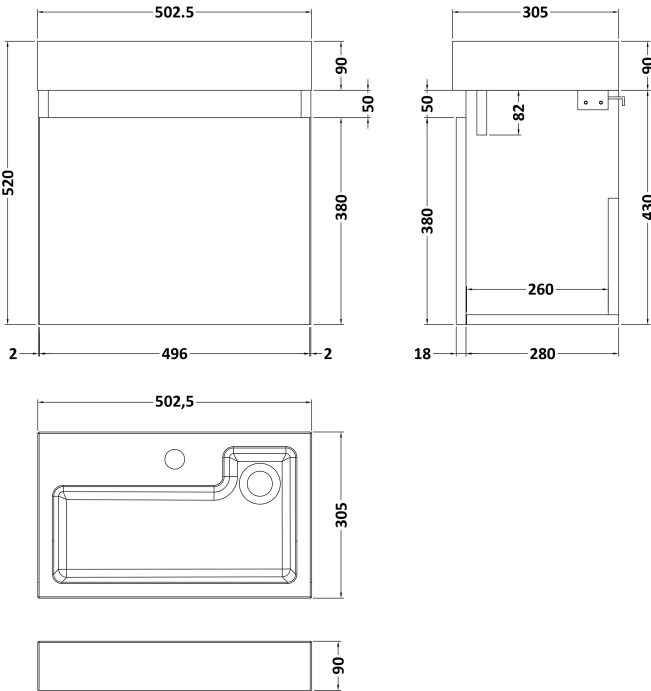
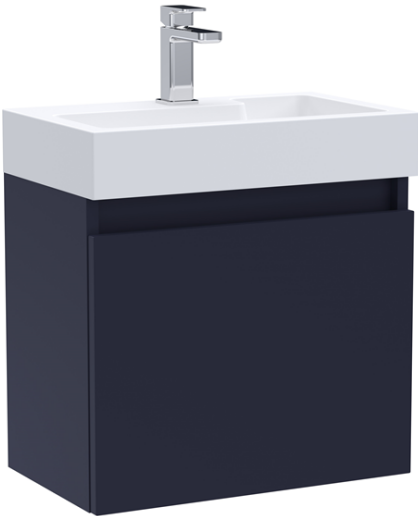


Sales Code: MER023

Description: 500X300 Wh 1-Door Vanity & Basin

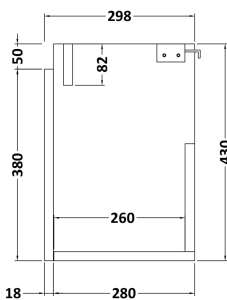
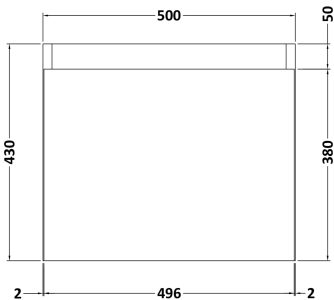
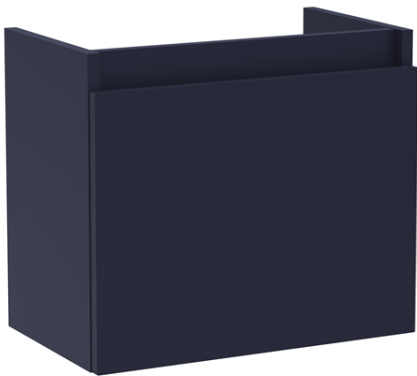


Packaging Details

Barcode: 5056462611624

Sales Code: MOZ1781

Description: 500X300 Wh 1-Door Unit



Product Dimensions

|                   |     |
|-------------------|-----|
| Height (mm):      | 430 |
| Width (mm):       | 500 |
| Depth (mm):       | 300 |
| Nett Weight (kg): | 9.5 |

Packaging Dimensions

|                    |     |
|--------------------|-----|
| Height (mm):       | 450 |
| Width (mm):        | 520 |
| Depth (mm):        | 315 |
| Gross Weight (kg): | 10  |

Packaging Data

|               |                     |
|---------------|---------------------|
| Box Colour:   | Brown Cardboard Box |
| Box Qty:      | 1                   |
| Label Size:   | 50 x 100            |
| Label Colour: | White Label         |
| Label Qty:    | 2                   |

Outer Box Dimensions (If Applicable)

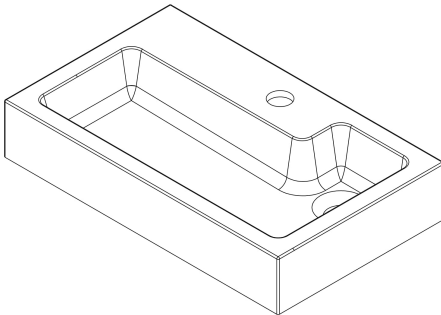
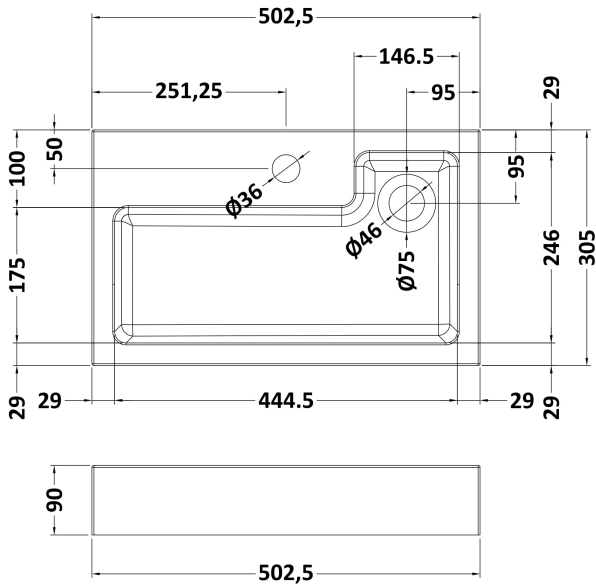
|                    |               |
|--------------------|---------------|
| Height (mm):       |               |
| Width (mm):        |               |
| Depth (mm):        |               |
| Gross Weight (kg): |               |
| Barcode:           | 5056462611587 |

Product Details

|                          |                      |
|--------------------------|----------------------|
| Country of Origin:       | United Kingdom       |
| Fitting Instruction:     | No                   |
| CE & UKCA:               | N/A                  |
| FSC Certified Materials: | Yes                  |
| Colour:                  | Electric Blue        |
| Construction Method:     | Cam & Wood Dowel     |
| Construction Type:       | Rigid                |
| Cabinet Finish:          | MFC Smooth Matt      |
| Fascia Finish:           | MFC Smooth Matt      |
| Cabinet Thickness (mm):  | 18                   |
| Fascia Thickness (mm):   | 18                   |
| Drawer Included:         | No                   |
| Drawer Type:             | Not Applicable       |
| No of Shelves:           | 0                    |
| Hinge Type:              | 95 Degree Soft Close |
| Hinge Included:          | Yes                  |
| Adjustable Legs:         | No, Not Required     |
| Fixings Included:        | Yes                  |
| Handle Style:            | Not Applicable       |
| Waste Shroud:            | Not Applicable       |
| Handle Included:         | No, Not Required     |
| Handle Type:             | Not Applicable       |

Sales Code: PMB021

Description: L Shaped Poly Marble Basin 503 X 305 Rw



Product Dimensions

|                   |      |
|-------------------|------|
| Height (mm):      | 90   |
| Width (mm):       | 503  |
| Depth (mm):       | 305  |
| Nett Weight (kg): | 10.5 |

Packaging Dimensions

|                    |     |
|--------------------|-----|
| Height (mm):       | 90  |
| Width (mm):        | 525 |
| Depth (mm):        | 380 |
| Gross Weight (kg): | 11  |

Packaging Data

|               |                               |
|---------------|-------------------------------|
| Box Colour:   | Brown Cardboard Box - Printed |
| Box Qty:      | 1                             |
| Label Size:   | 100 x 50                      |
| Label Colour: | White Label                   |
| Label Qty:    | 2                             |

Outer Box Dimensions (If Applicable)

|                    |               |
|--------------------|---------------|
| Height (mm):       |               |
| Width (mm):        |               |
| Depth (mm):        |               |
| Gross Weight (kg): |               |
| Barcode:           | 5056211875857 |

Product Details

|                              |                        |
|------------------------------|------------------------|
| Country of Origin:           | China                  |
| Fitting Instruction:         | No                     |
| Certification: CE & UKCA: No | WRAS: N/A WRAS No: N/A |
| Product Material:            | Polymarble             |
| Fixing Supplied:             | No                     |

|                     |                            |                               |
|---------------------|----------------------------|-------------------------------|
| <b>Pans/Bidets:</b> | Trap Style: Not Applicable | Includes Seat: Not Applicable |
|---------------------|----------------------------|-------------------------------|

|               |                                |                            |
|---------------|--------------------------------|----------------------------|
| <b>Seats:</b> | Seat Type: Not Applicable      | Material: Not Applicable   |
|               | Function: Not Applicable       | Hinge Type: Not Applicable |
|               | Hinge Material: Not Applicable |                            |

|                  |                                |                          |
|------------------|--------------------------------|--------------------------|
| <b>Cisterns:</b> | Operating Type: Not Applicable | Fittings: Not Applicable |
|                  | Lever Type: Not Applicable     |                          |

|                |                             |                                |
|----------------|-----------------------------|--------------------------------|
| <b>Basins:</b> | Tap Hole: One Taphole       | Chain Stay Hole: No            |
|                | Template: Not Required      | Waste Type Req: Unslotted      |
|                | Overflow Inc: No            | Overflow Cover: Not Applicable |
|                | Inner Bowl Depth (mm): 70mm |                                |